

etyBLU™

 Bluetooth®



Dual Mode
Noise-Isolating
Headset

User Manual

**For complete operating instructions, go to
www.etymotic.com/etyblu/manual**

Dansk	For de fulde betjeningsinstruktioner, gå til www.etymotic.com/etyblu/manual
Deutsch	Die komplette Betriebsanweisung finden Sie unter www.etymotic.com/etyblu/manual
Español	Para obtener las instrucciones completas de uso, visite www.etymotic.com/etyblu/manual
Français	Pour les instructions d'utilisation détaillées, consultez : www.etymotic.com/etyblu/manual
Italiano	Per istruzioni d'uso complete, visitare il sito www.etymotic.com/etyblu/manual
Niederländisch	Voor volledige bedieningsinstructies gaat u naar www.etymotic.com/etyblu/manual
한국의	사용설명서 전문을 원하시면 www.etymotic.com/etyblu/manual 로가십시오
中文	若需查阅完整的操作说明, 请访问 www.etymotic.com/etyblu/manual
日本語	すべての操作説明書を参照する場合は、 www.etymotic.com/etyblu/manual をご覧ください

Table of Contents

Introduction.....	4
Included.....	5
Bluetooth Profiles	5
Identification	6
Dual Modes—Two Ways to Use	7
Pairing	8
Charging	9
Earpiece Insertion/Removal.....	10
BLUmaxx Connect/Disconnect	11
Multi-Function Button (MFB)	12-13
Earpiece Filter	14
Caution	15
FCC Info	16-17
Proper Care	18
About Etymotic Research.....	19
Warranty	19
LED Chart	20

Introduction

The Etymotic etyBlu dual mode, noise-isolating headset contains two microphones. One microphone is located internally at the end of the earpiece; the other, BLUmaxx™, a highly directional, noise-rejecting microphone quickly connects to the earpiece. The combination of an in-ear noise-isolating earphone and a directional microphone placed close to the mouth provides exceptional sound quality and clear communication at both ends of the conversation. The etyBLU headset was developed by Etymotic Research for use in high levels of background noise. Another Etymotic first.

Included

- etyBLU Dual-Mode Noise-Isolating Headset
- BLUmaxx Quick-Connect Mic
- Earloop
- Assorted eartips
- Windscreen
- Filter changing tool with replacement filter
- Storage case
- USB charging cable

Bluetooth Profiles

Compliant with Bluetooth® Core Specification 2.1, Headset 1.1 and Handsfree 1.5 profiles (supports Bluetooth 1.1 and later)

Talk Time: Up to 7 hours

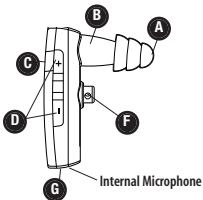
Standby: Up to 100 hours

Range: 30 feet (10 meters)

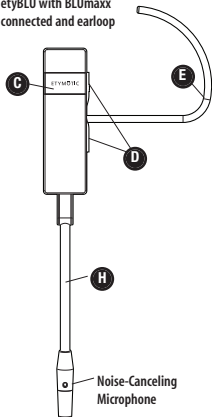
Weight: Less than .5 oz

Identification

No boom, no earloop



etyBLU with BLUmaxx connected and earloop



- A. Eartip
- B. Speaker
- C. Multi-Function Button (MFB)
- D. Volume Up/Down
- E. Optional Earloop
- F. Earloop Holder
- G. Jack for BLUmaxx Mic and Charging Cable
- H. Quick-Connect BLUmaxx Mic

Dual Modes—Two Ways to Use



Internal Mic Mode

The earpiece is designed to be self-supporting in the ear canal, so the earloop is optional. Push the earloop through the earloop holder and adjust for a secure fit.



BLUmaxx Mic Mode

Exceptional clarity in noisy environments.

- Gives up to 25 dB more noise cancellation of the talkers voice compared to the internal mic.

Important: To ensure optimal performance it is important that the eartip seals the ear canal.

Pairing

Pairing varies by device

The etyBLU headset is discoverable for five minutes after Power On.

- Turn the phone OFF and then back ON.
- Turn on the mobile phone's Bluetooth function.
- Press and hold the Multi-Function Button (MFB) for 5 seconds.
- The blue LED will flash rapidly when ready for pairing. The etyBLU stays in pairing mode for 5 minutes.
- Activate the search for BT and/or audio devices on the phone
- When the etyBLU is found, the phone will display "etyBLU." Scroll to it and press OK to confirm pairing.
- If a passkey/password is requested, enter 0000.

Note: Bluetooth transmitter pairing varies. For best results, consult the user instructions for the specific device being paired with the etyBlu. Some mobile phones require a security setting change for automatic headset-phone pairing.

Charging

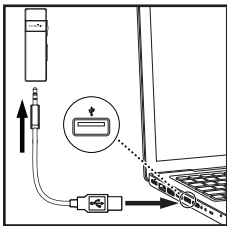
The etyBLU headset comes with a rechargeable lithium polymer battery. Charge the headset for at least one hour before first use.

Charging time from empty: 2-3 hours

80% charge: 1 hour

Charging with the USB connector (included)

- Remove the BLUmaxx Mic prior to charging
- Plug the connector into the etyBLU headset as shown.
- Plug USB end of the charging cable into a computer USB port as shown.
- The solid yellow LED will indicate that the headset is charging.
- When charging is complete the yellow LED turns OFF.



Insertion

Important: Sound quality and noise isolation depend on a good eartip seal.

- Carefully insert the earpiece while pulling up and out on the back of the ear.
- Twist the earpiece while inserting until outside noise is blocked out.
- Position the earpiece for best fit and comfort.



For a video on proper earphone insertion go to www.etymotic.com

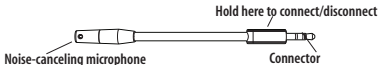
- **Flanged eartip:** Moistening eases insertion.
- **Foam eartip:** Roll down or compress foam eartip before inserting. Hold the eartip in place for about 5 seconds while the foam expands to create a tight seal in the ear canal.

Removal

To avoid discomfort, remove the headset slowly with a twisting motion to gradually break the seal. Open jaw slightly to equalize pressure, because suction can occur when the eartip is removed.

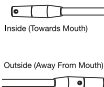
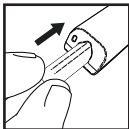
BLUmaxx Connect/Disconnect

NOTE: The BLUmaxx Mic can quickly connect or disconnect without disconnecting a call.



To Connect

1. The plug on the BLUmaxx Mic is designed to connect to the headset only one way. Do not force the plug into the jack. It will connect easily.
2. When the BLUmaxx Mic is connected correctly, the opening at the tip of the microphone is closest to the mouth and the opening at the middle of the mic tip faces away from the mouth.



To Disconnect

1. Grasp the connector and gently remove the BLUmaxx Mic.
2. Keep the BLUmaxx Mic in the storage case for easy access.



Multi-Function Button (MFB)

Power ON

PRESS the MFB for 4 seconds to Power On. Blue LED is solid for one second while powering ON. Blue LED blinks when the headset is ON.

Power OFF

PRESS the MFB for 4 seconds to Power Off. Yellow LED is solid for one second then powers OFF.

Volume

PRESS the Volume UP (+) and Volume DOWN (-) buttons on the side of the headset to increase or decrease volume. The exact number of volume levels is set and maintained by the phone.

Answer a Call

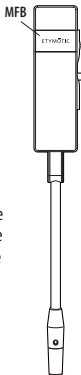
PRESS the MFB once quickly (short press) to answer a call when phone rings.

End a Call

PRESS the MFB once quickly (short press) to disconnect the call.

Reject a Call

PRESS and **HOLD** the MFB (long press) for one second to reject an incoming call.



Multi-Function Button (MFB)

The following features depend on phone support:

- | | |
|---------------------------------------|---|
| Redial | PRESS and HOLD the MFB (long press) for one second. |
| Voice Call | PRESS the MFB quickly (short press) to make a voice call. Voice Call works when the unit is in standby. |
| Transfer a Call to the Handset | Double PRESS the MFB (two quick presses less than one second) during a call |
| Call Waiting | <ul style="list-style-type: none">• PRESS and HOLD the MFB (long press) for one second to put a call on hold to answer another• PRESS and HOLD the MFB (long press) for one second to switch between calls• PRESS the MFB quickly (short press) to end the current active call |
| 3-Way Calling | Add another caller: Depending on the call status, double press the MFB to add the held call to the conference. |

Earpiece Filter

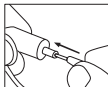
The earpiece in the etyBLU headset has a special filter that smoothes the frequency response and prevents earwax from entering the earphone. The filter is located at the end of the earphone and is visible when the eartip is removed.

Change the filter if loudness decreases or the sound quality declines. **Note:** Filters are not reusable.

Filter Removal



1. Remove eartip.



2. Insert tool into the filter.



3. Remove filter.

Filter Replacement



1. Insert a new filter and press gently against a hard surface to secure it in place.



2. Re-attach eartip.

Caution

Consult an audiologist or physician if you have excessive ear wax, difficulty inserting the eartips, or discomfort after prolonged use. The etyBLU dual-mode headset excludes most external sounds. Always use extreme caution while using any headset when operating a motorized vehicle.

Do not use the headset at excessively loud levels. Research confirms that earphones that seal the ear canal allow listeners to listen at safer levels. Noise-induced hearing loss is a function of exposure time, the average sound level and the peak of very loud sounds. A sealed eartip and lower listening levels allow for longer periods of safe listening time.

FCC & Other Information

This equipment has been tested and found to comply with the limits for a Class B digital device, pursuant to Part 15 of the FCC Rules. Operation is subject to the following two conditions:

1. This device may not cause harmful interference, and
2. This device must accept any interference received, including interference that may cause undesired operation. These limits are designed to provide reasonable protection against harmful interference in a residential installation. Some equipment operates at frequencies that may cause interference to nearby TVs and VCRs; to minimize or prevent such interference, the system base should not be placed near or on top of a TV, PC monitor, or VCR; and, if interference is experienced, moving the desk station farther away from the TV or VCR will often reduce or eliminate the interference. However, there is no guarantee that interference will not occur in a particular installation. If this equipment does cause harmful interference to radio or television reception, which can be determined by turning the system off and on, the user is encouraged to try to correct the interference by one or more of the following measures:
 1. Increase the separation between the equipment and receiver.
 2. Consult the dealer or an experienced radio TV technician for help.

FCC & Other Information

FCC Health and Safety Information

Your device is a radio transmitter and receiver. It is designed and manufactured not to exceed the emission limits for exposure to radio frequency (RF) energy set by the Federal Communications Commission of the U.S. Government. The FCC has established criteria for the amount of radio frequency energy various products may produce depending on their intended usage. This product has been evaluated and found to comply with the FCC's exposure criteria. For body worn operation, the FCC RF exposure guidelines were also met when used with the accessories supplied or designed for this product. Use of other accessories may not ensure compliance with FCC RF exposure guidelines and should be avoided. Caution: Any changes or modifications not expressly approved by the party responsible for compliance could void the user's authority to operate this device. This device must not be colocated with other transmitters.

Proper Care

- Do not expose the headset to extreme temperatures.
- Avoid dropping and strong impact.
- Leave an eartip on the headset for shock protection.

Cleaning/replacement of eartip

- Clean or replace a flanged eartip prior to use by others.
- Replace a foam eartip prior to use by others.
- Clean a flanged eartip by simply wiping it off with a soft cloth. If water and mild soap are used, remove the eartip, clean and dry it before replacing it on the headset.
- Replace disposable foam eartips regularly.
- Replace flanged eartips every 6-12 months.

About Etymotic Research

Etymotic Research has spent twenty-five years developing in-ear technology for auditory research, precision monitoring and critical listening. Etymotic has developed many innovative hearing technologies available today. Etymotic's products are used by musicians and others who insist on superior sound quality. Etymotic means "true to the ear."

Warranty

Etymotic Research, Inc. warrants this product against defects in material or workmanship for a period of two years from the date of original purchase from an authorized Etymotic distributor or reseller. Etymotic will repair or replace the defective product at its option if returned within the warranty period to our designated service facility. This warranty is in lieu of all other warranties, expressed or implied, including, but not limited to, any implied warranty of merchantability or fitness for a particular purpose.

LED Chart

Power ON Blue LED is solid for one second while powering on

Power OFF Yellow LED is solid for one second then powers off

Pairing Blue LED blinks twice every 3 seconds

Active call Blue LED blinks once per second

No active call Blue LED blinks every 4 seconds

Charging Solid yellow LED

Low battery Blinking yellow LED

Charge complete Yellow LED off

ETYMÖTIC RESEARCH INC.

61 Martin Lane • Elk Grove Village, IL 60007

www.etymotic.com • 1-888-389-6684



©2008. etyBLU and BLUmaxx are trademarks of Etymotic Research, Inc. Bluetooth is a registered trademark of Bluetooth SIG, Inc.