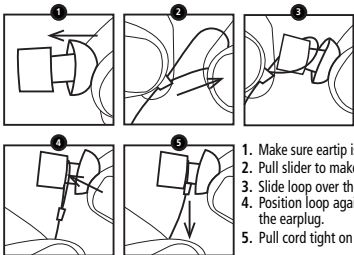


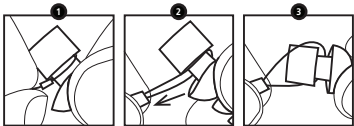
NECK CORD

Installation



1. Make sure eartip is on securely.
2. Pull slider to make a loop.
3. Slide loop over the earplug.
4. Position loop against the earplug.
5. Pull cord tight on the earplug.

Removal



1. Grasp slider.
2. Pull slider to expand the loop.
3. Remove cord.

NOTE: When using a neck cord, take precautions that it does not catch on a nearby object.